



# Installation Guide

## **Copyrights**

Copyright © 2006-2007 CACE Technologies, LLC

All rights reserved.

This document may not, in whole or part, be: copied; photocopied; reproduced; translated; reduced; or transferred to any electronic medium or machine-readable form without prior consent in writing from CACE Technologies, LLC.

## **AirPcap Installation Guide**

Document Version: 2.2  
Document Revision: July 31, 2007

CACE Technologies, LLC  
Davis, CA 95616  
(530) 758-2790  
(530) 758-2781 (fax)  
[support@cacetech.com](mailto:support@cacetech.com)  
<http://www.cacetech.com>

# Contents and Figures

---

## Contents

Introduction .....	4
Requirements.....	4
What is in the Box .....	4
What is on the CD.....	4
Driver Installation (Windows 2000/XP/2003/Vista) .....	5
Wireshark Network Analyzer Installation .....	7
Additional Tools Installation .....	8
Developers Resources Installation .....	8
Contact Us .....	8

## Figures

Figure 1: The CD Setup Page – Install Driver.....	5
Figure 2: Found New Hardware Wizard .....	6
Figure 3: The CD Setup Page – Wireshark Installation ..	7

## **Introduction**

Welcome to CACE Technologies' AirPcap wireless capture system. This Installation Guide applies to the all of the adapters in the AirPcap Product Family. These are AirPcap Classic, Tx, Ex, and N.

## **Requirements**

The minimum requirements to install and run the AirPcap Software are:

- Pentium 3 processor
- 256 Mbyte RAM
- USB 2.0 interface (or an appropriate interface for AirPcap N adapters)
- One of the following operating systems: Windows 2000, Windows XP Service Pack 2, Windows 2003, Windows Vista. There is x64 64-bit support for all AirPcap adapters except for AirPcap N.

## **What is in the Box**

- One adapter from the AirPcap Product Family
- This Installation Guide
- The AirPcap Software Distribution CD
- Pigtail: 30 cm MC to SMA cable (AirPcap Ex only)
- One 2.4GHz band 5dBi antenna (AirPcap Ex only)

## **What is on the CD**

The AirPcap Software Distribution CD contains:

- The AirPcap driver, needed to use the adapter
- This Installation Guide
- The AirPcap Family of Wireless Capture Adapters: User's Guide
- The Wireshark® Network Analyzer
- A Folder with additional programs (e.g., Kismet)
- Resources for developers interested in directly accessing the AirPcap adapter from their applications

## Driver Installation (Windows 2000/XP/2003/Vista)

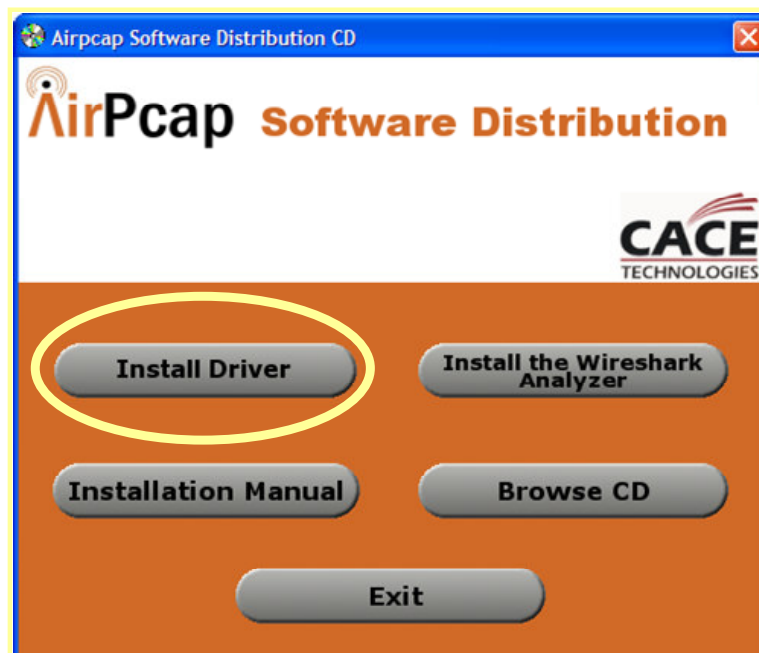
---

**Important:** Do NOT insert your adapter before installing the software. Please follow the steps below and this guide will inform you when it is appropriate to insert the adapter.

---

To install the software, follow these steps:

1. Power on your PC.
2. If you have a previous version of the AirPcap Software Distribution already installed in your system, uninstall it by clicking on:  
*Start → Control Panel → Add or Remove Programs → AirPcap Software*
3. Insert the AirPcap Software Distribution CD into your CD drive.
4. The CD setup page should appear automatically. If it does not, please select your CD-Rom Drive manually to open the setup page.



*Figure 1: The CD Setup Page – Install Driver.*

5. Click on "Install Driver" to initiate the installation.
6. Follow the installation instructions. The installer tries to detect if WinPcap is already installed in the machine, and if the installed WinPcap version supports

AirPcap wireless capture. If not, you will need to upgrade WinPcap during the installation.

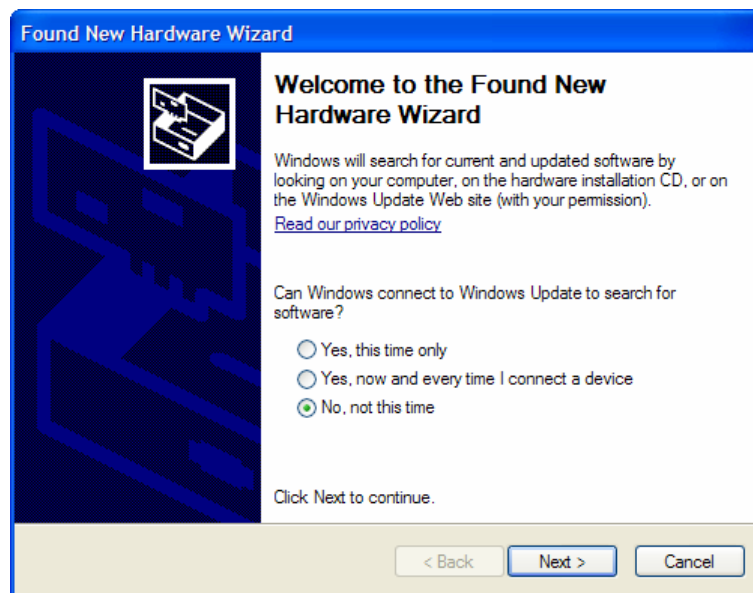
Upon completing the software installation, reboot the system if requested.

---

**Important: Now plug your adapter into an appropriate port on your machine.**

---

Depending on the operating system version, when you plug the adapter in for the first time, Windows may show the "Found New Hardware Wizard" (Figure 2).



*Figure 2: Found New Hardware Wizard*

Any time this happens, answer these questions (if they appear) in the following way:

- *Can Windows connect to Windows Update to search for software?*  
→ Select **"No, not this time"**
- *What do you want the wizard to do?*  
→ Select **"Install the software automatically"**

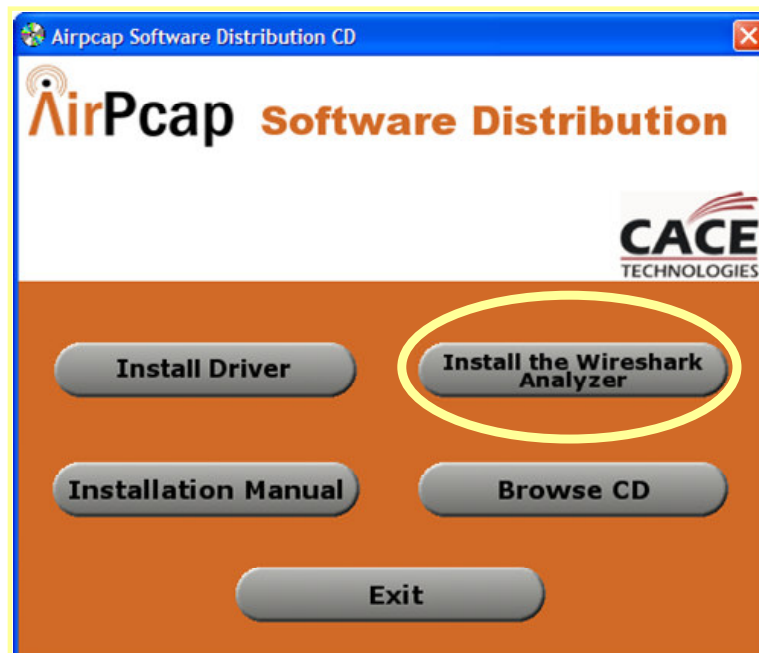
## Wireshark Network Analyzer Installation



Wireshark, previously known as Ethereal®, is the world's most used network analyzer. It is used by network professionals for troubleshooting, analysis, software and protocol development, and education. Your AirPcap Wireless adapter has been integrated into Wireshark. Once you have installed Wireshark you can immediately start capturing and analyzing 802.11 traffic.

To install Wireshark, follow these steps:

1. If you have a previous version of Wireshark already installed in your system, uninstall it by clicking on:  
*Start → Control Panel → Add or Remove Programs → Wireshark*



**Figure 3: The CD Setup Page – Wireshark Installation**

2. Insert the AirPcap Software Distribution CD into your CD drive.
3. The CD setup page should appear automatically. If it does not, please select your CD-Rom Drive manually to open the setup page.
4. Click on "*Install the Wireshark Analyzer*" to initiate the installation.
5. Follow the installation instructions.

## Additional Tools Installation

Additional AirPcap-compatible programs can be found in the installation CD, by clicking on the "browse CD" button from the CD setup page, and then opening the *programs* folder. The available tools include **Kismet**, **Aircrack-ng**, **Cain & Abel** and **Windump**.

## Developers Resources Installation

CACE Technologies provides a developer's pack with everything you need for using an AirPcap adapter in your application for capturing 802.11 packets:

- Include and lib files
- Online API documentation
- A ready-to-compile set of example programs that shows how to configure the adapter and capture packets

The AirPcap Developer's pack can be found in the "*developers*" folder of the AirPcap Software Distribution CD. To use it, just copy the folder to your hard disk, and click on "*StartHere.html*".

The developer's folder also contains a copy of the WinPcap developer's pack, in the "*WinPcap\_Devpack*" subfolder. The AirPcap adapters are 100% compatible with WinPcap, and this makes it straightforward to add 802.11 support to your existing WinPcap-based application.

If you are interested in adding support for the AirPcap adapters in your program, you can contact CACE Technologies for support; write to:

[support@cacetech.com](mailto:support@cacetech.com)

## Contact Us

CACE Technologies  
Davis, CA 95616  
USA

Tel: 530.758.2790

Fax: 530.758.2781

Web: [www.cacetech.com](http://www.cacetech.com)